

Link® MORTUARY EQUIPMENT

SINGLE DECKS | DOUBLE DECKS
SUBURBAN RAMPS
ACCESSORIES





SS150 & XL Single Deck

FITS: MID-SIZE VANS, FULL-SIZE VANS & SUBURBAN VEHICLES

- Carries two standard cremation containers, two cots, one air tray, or one casket
- Transforms your vehicle into a first call vehicle with no modification
- Upgrade to SS150XL model to include four casket rollers

*Image of SS150XL on front cover



SR75 Minideck

FITS: SUBURBAN VEHICLES

- Protects your bumper with a professional appearance
- Ramp hinges up and out of the way when doors are closed to allow all the seats to be used
- No drilling or vehicle modifications necessary for install
- Easy to load and secure stretchers



SR50 Suburban Ramp

FITS: SUBURBAN VEHICLES

- Protects your bumper with a professional appearance
- Ramp hinges up and out of the way when doors are closed
- Snaps into place in seconds
- Solid 3/16" aluminum ramp protects rear bumper from stretcher damage



SS150XLC Single Deck

FITS: FULL-SIZE CARGO VANS

- Carries two cremation containers, two cots, one air tray, or one casket
- Fits a standard and oversized cot side-by-side (widest deck available)
- All-aluminum deck with glide strips and casket rollers
- Transforms full-size cargo vans into a first call vehicle



CT400 Casket Truck

- Use as a utility and display truck (D400 Drape Attachment available)
- Powder-coated steel framework

D400 Drape Attachment

- Made for CT400 Casket Truck
- Available in four colors: Black, Burgundy, Hunter Green, and Navy Blue

CDS300 Casket Drape

- Portable frame & drape to hide casket trucks (folds to 3" deep)
- Available in four colors: Black, Burgundy, Hunter Green, and Navy Blue



FC40 Flower Cart

- Easily transport 16 plants at a time
- Includes two FT2234 flower trays
- 24.25"W x 34.5"L x 40.5"H

FT2234 Flower Tray

- Heavy duty but lightweight tray
- 22"W x 34"L x 8"H



DD-EX2 Double Deck

FITS: MID-SIZE VANS

- Carries four cots, three cremation containers, or two air trays
- Powered upper deck raises and lowers in seconds
- Available with two deck lengths for vehicles with a longer wheelbase
- 600 lb. capacity on upper deck
- Bulkhead required



DD2000-XLC Double Deck

FITS: FULL-SIZE CARGO VANS

- Carries four standard cremation containers, four cots, two air trays, or two caskets
- Fits a standard and oversized cot side-by-side (widest deck available)
- Powered upper deck with safety latch raises and lowers in seconds
- Bulkhead required



DD4000 Casket Transporter

FITS: FULL-SIZE CARGO VANS

- Allows four caskets to be transported safely and easily
- Powered upper deck tilts up and down for loading and unloading
- Does not require commercial drivers license (state requirements vary)
- 600 lb. capacity on upper deck
- Bulkhead required



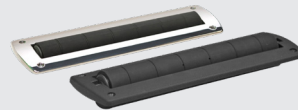
HD150 Hearse Deck

- Durable aluminum framework
- Rubber mat extends over bumper
- Protects hearse floor
- Easy to secure stretchers
- Lightweight at 50 lbs.



Cot Cups

- Solid cast aluminum construction



Roller Kits

- Roller frame is totally enclosed



Glide Strips

- Available in 8' lengths and can be cut down to size



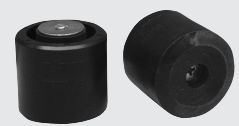
Bier Pins Kits

- Adjustable or stationary bier pin options



Bier Pin Plates

- Available with 1, 2, 5, or 10 holes



Cot Post Tip

- Can pair with the CPT20 cot cup

CX100 Exhaust Fan

- For use in the rear of vehicles and controlled from the front cab area
- Displaces air at a rate of 100 CFM

VEHICLE FIT GUIDE

Make	Model	Year Wheelbase Roof Height	SR50	SR75	SS150 SS150XL SS150XLC			DD-EX2	DD2000 XLC	DD4000
			7810A003	78113A00 78113A01 78113A02	STD 7124B000 7124B001	EXT 7135X004 7135X005	XLC 7135D001	7223B001 7223B003	7226A000	7225D000 7225D001 7225D002
Chevrolet GMC Cadillac	Express / Savana 1500	1996-Present				X	X			
	Express / Savana 2500	1996-Present				X	X		X	
	Express / Savana 3500	1996-Present				X	X		X	
	Suburban Yukon XL Escalade ESV	2007-2014		X	X		X			
2015-2020				X		X				
2021-Present				X		X				
Chrysler	Town and Country	2009-2016			X					
	Pacifica	2017-Present			X					
Dodge RAM	ProMaster 1500 Cargo Van	118 Standard & High				X	X			
	ProMaster 1500, 2500, & 3500 Cargo Van	136 Standard & High				X	X			
	ProMaster 2500 & 3500 Cargo Van	159 High				X	X		X	
	ProMaster 3500 Cargo Van	159 EXT High				X	X		?	X
	Caravan	2009-2020			X					
Ford	E-Series Cargo Van	1992-2015				X			X	
	Transit 150 Cargo Van	Low & Mid Roof				X	X		X	
	Transit 250 Cargo Van	Low, Mid, & High				X	X		X	
	Transit 350 Cargo Van	Low, Mid, & High				X	X		X	
	Expedition EL	2007-2017				X				
Honda	Odyssey	1999-Present			X					
Hyundai	Entourage	2007-2009			X					
Kia	Carnival	2021-Present			X					
Nissan	NV 1500 Cargo Van	Standard				X	X		X	
	NV 2500 Cargo Van	Standard				X	X		X	
	NV 2500 Cargo Van	High				X	X		X	X
	NV 3500 Cargo Van	Standard				X	X		X	
	NV 3500 Cargo Van	High				X	X		X	X
	Quest	2004-2009			X					
Mercedes-Benz	Sprinter 2500 Cargo Van	144 Standard & High				X	X		X	X
	Sprinter 3500 Cargo Van	170 Standard & High				X	X		X	X
	Sprinter 3500 EXT Cargo Van	170 EXT High				X	X		?	
	Metris Cargo Van	126 or 135 WB			X	X		X		
Toyota	Sienna	2004-Present			X					

"X" Fits In Standard Vehicle. "?" Investigation Required.

NOTE: Double deck installation requires a van partition bulkhead. Vehicles with rear air conditioning units and/or dual rear-wheel packages will restrict the installation of this product. SS150 or SS150XL fits in most older model cargo vans. Call us today for a full investigation.

WARNING: Link products must be professionally installed by a trained technician when being placed into an Electric Vehicle (EV). Electric Vehicles have higher voltage batteries and cables and drilling into Electric Vehicles may cause serious bodily harm and possibly death. Link is not responsible for optional configurations or equipment that restrict the installation of this product in any way. Consult OEM body builder guides for additional installation guidelines.